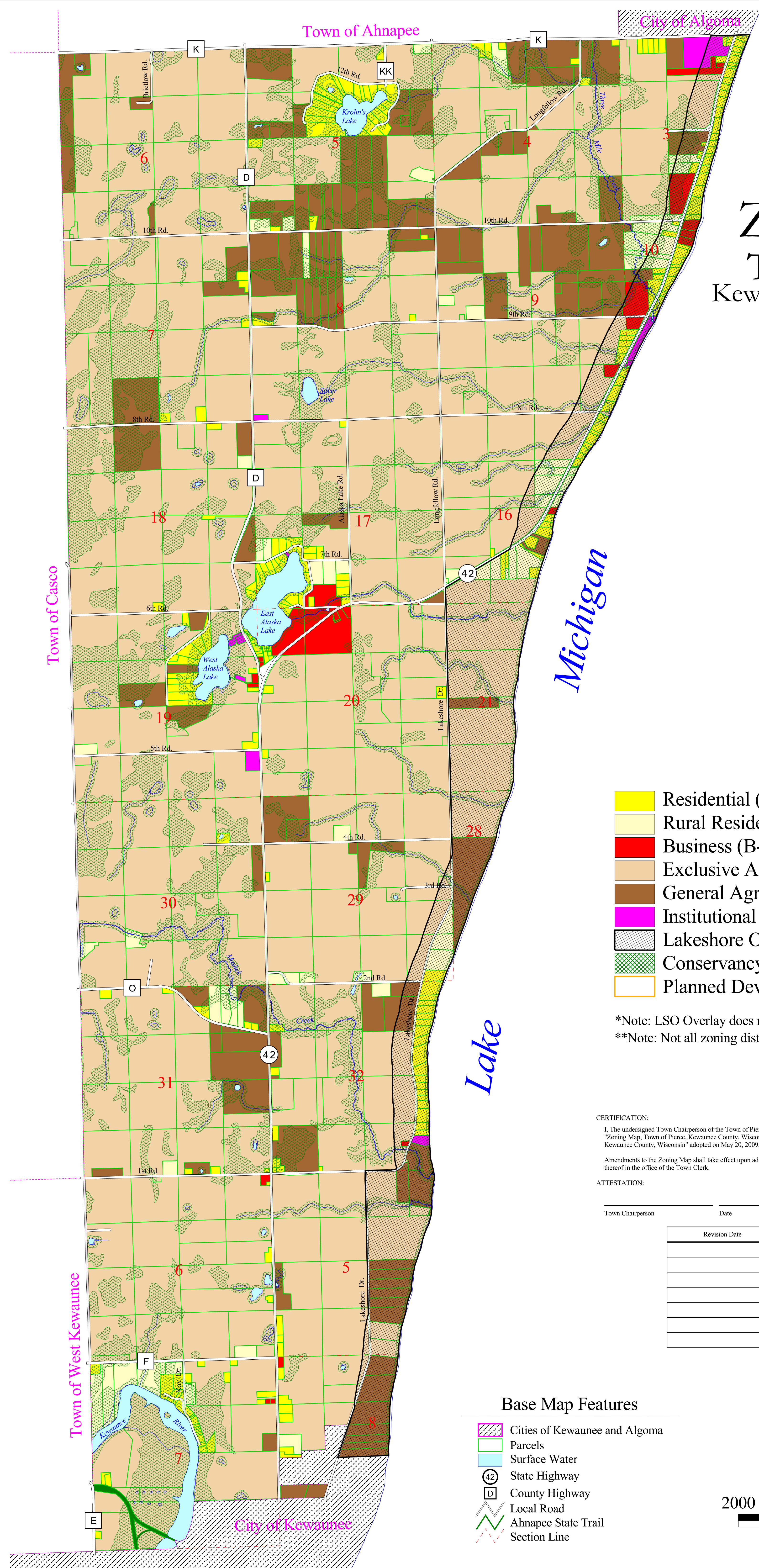


Effective:  
May 27, 2009

# Zoning Map

## Town of Pierce

Kewaunee County, Wisconsin



- Residential (R-1)
- Rural Residential (R-2)
- Business (B-1)
- Exclusive Agriculture (A-1)
- General Agricultural (A-2)
- Institutional (I-1)
- Lakeshore Overlay (LSO)\*
- Conservancy Overlay (CO)
- Planned Development Overlay (PDO)\*\*

\*Note: LSO Overlay does not apply to parcels zoned A-1  
 \*\*Note: Not all zoning districts are in use.

**CERTIFICATION:**  
 I, The undersigned Town Chairperson of the Town of Pierce, Kewaunee County, Wisconsin, do hereby certify that this "Zoning Map, Town of Pierce, Kewaunee County, Wisconsin" was approved as part of "The Town of Pierce Zoning Ordinance, Kewaunee County, Wisconsin" adopted on May 20, 2009, effective May 27, 2009, and is available in the office of the Town Clerk.

Amendments to the Zoning Map shall take effect upon adoption by the Town Board, and the filing of proof of posting or publication thereof in the office of the Town Clerk.

**ATTESTATION:**

Town Chairperson	Date	Town Clerk	Date
------------------	------	------------	------

Revision Date	Initials

### Base Map Features

- Cities of Kewaunee and Algoma
- Parcels
- Surface Water
- 42 State Highway
- D County Highway
- Local Road
- Ahnapee State Trail
- Section Line

